

What's New in Mercury QuickTest Professional 8.0

Mercury is pleased to announce QuickTest Professional 8.0, a major update to QuickTest Professional and part of Mercury Quality Center.

New Features

Zero-Configuration Keyword-Driven Testing

Keyword-driven testing is today's driver of increased QA team productivity, since it represents test steps in a table format that is easily understood and modified. However, the challenge of keyword-driven testing has been the cost associated with setting up the actual keywords. For any keyword solution, even so-called "scriptless" tools, complex code needs to be written to implement each keyword before the tool can certify application functionality. This code is hard to write and harder to maintain. In fact, some companies feel that the cost of writing this code outweighs the benefits of keyword-driven testing.

QuickTest Professional 8.0 eliminates these issues by providing *Zero-Configuration Keyword-driven Testing*. We've already built hundreds of keywords into QuickTest Professional -- so you don't have to. Out of the box, these keywords work on every enterprise environment, old and new, from .NET to 3270 mainframe terminal emulators and everything in between. Mercury is able to offer zero-configuration keyword-driven testing because of our fifteen years experience in building the industry's widest environment coverage. Zero configuration means that you can build tests sooner, avoid lengthy consulting engagements, and achieve better ROI on your testing efforts.

QuickTest Professional implements keyword-driven testing in its new **Keyword View**. Here's how it works: all test steps are displayed in a spreadsheet-like format, with rows, columns, and cells. Each row represents a particular test step. Within each row, there are cells to specify the details of each step -- the test object to manipulate, the object method to invoke, method parameters, etc.

Clicking on a cell displays a context-sensitive list of appropriate choices. For example, if you click on a cell in the Item column, you see a list of all available objects (e.g., buttons and text fields). If you click on a cell in the Operation column, you see all the methods for the selected object class. Steps can easily be moved or deleted. With the Keyword View, entering and modifying test steps becomes a simple, point-and-click process.

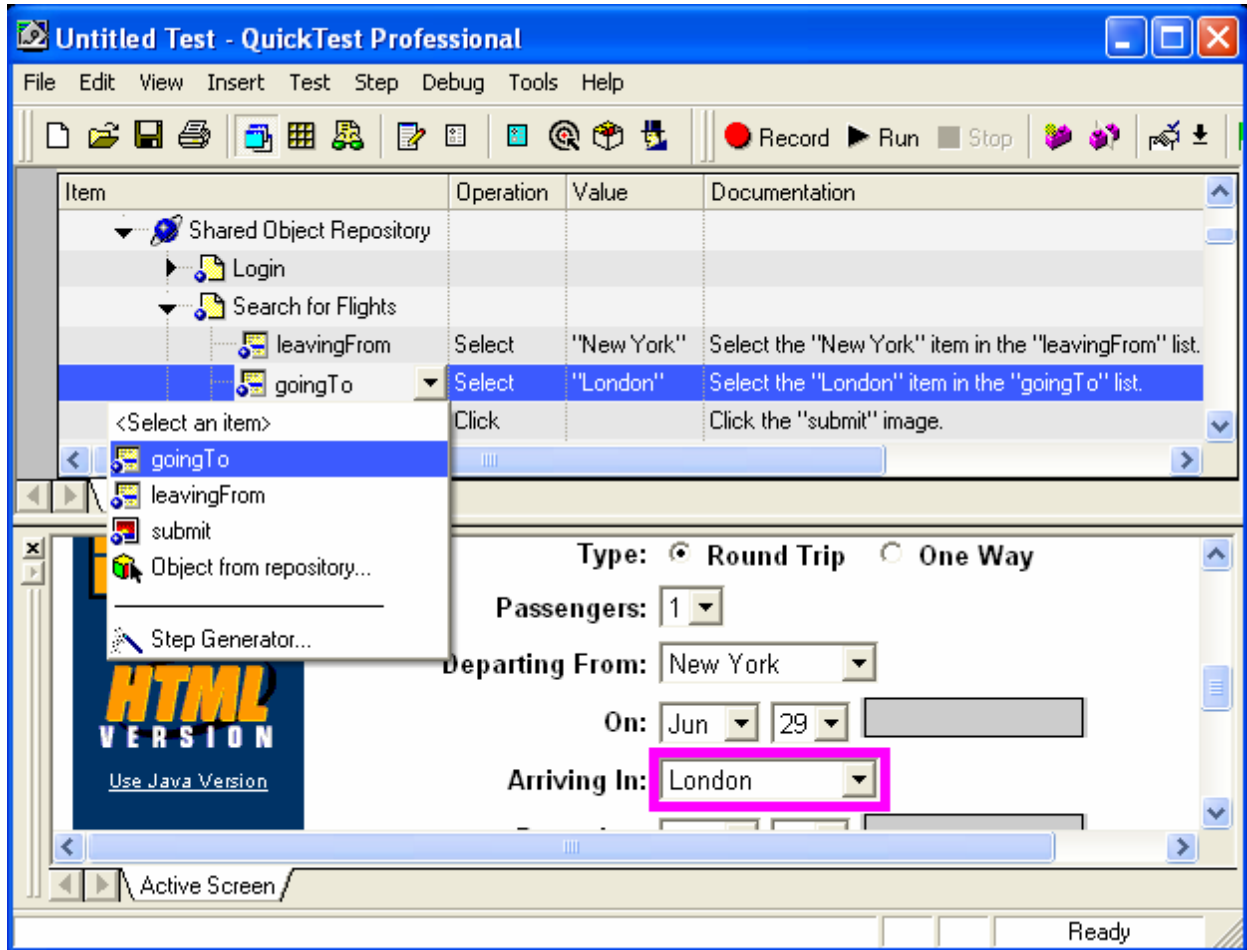
The Keyword View built-in flexibility lets QA teams easily implement a keyword-driven testing methodology. All test scripts created in earlier versions of QuickTest Professional or Astra QuickTest are automatically converted to keyword-driven tests.

In summary, the Keyword View simplifies test creation and modification, by enabling you to easily build and update tests. The Keyword View reduces test creation and modification times, as well as training requirements for new QA team members.

Auto-Documentation

Auto-documentation lets you build *and* document tests in just one step, reducing test creation time. As you build your test, auto-documentation creates plain-English test step descriptions, without any user involvement. These descriptions can be viewed within Mercury Business Process Testing and shared by a global testing team. No longer do subject matter experts and other non-technical QA staff need to

decipher code to understand what a test does -- all descriptions are in easily understood plain-English sentences. Auto-documentation reduces training costs, and increases test readability and reuse.



QuickTest Professional's Keyword View lets use easily create and modify test scripts without writing code.

QuickTest Professional's auto-documentation summarizes each test step in plain English.

Enhanced Expert View

For more technical users, the Expert View is still available in QuickTest Professional. This is important because real-world testing sometimes requires a level of flexibility not available in any keyword framework. Time-saving Expert View improvements include:

- **Object Intellisense:** view a list of all valid objects in a statement. For example, when typing Browser(", you will automatically get the list of all the available browsers.
- **Syntax Expansion:** when you type a control statement (e.g., "if ") all other parts of the statement ("then, else") are filled in. Works for the following types of statements: with, if, while, for, and do.
- **Round-trip Synchronization:** the Expert View and Keyword View are automatically kept in sync. For example, if you add a step in the Expert View, it appears in the Keyword View.
- **Syntax Validation:** QuickTest Professional checks the syntax of your VBScript as you switch from the Expert View to the Keyword View, providing detailed explanations of syntax violations.
- **Outdent:** press shift-tab to shift a line of VBScript to the left. The opposite of indent.
- **Multiple-Tab:** indent or outdent multiple lines of your code at once.

With this seamless integration of programmatic and keyword methodologies, technical quality engineers and non-technical subject matter experts can easily collaborate to build tests. This stands in contrast to other testing tools, where you need to use two separate tools to build tests -- one to edit the keywords, and another to edit the underlying test script. Often these testing tools come from two different vendors, which introduces integration and customer support issues.

Business Process Testing Integration

QuickTest Professional 8.0 is fully integrated with Mercury Business Process Testing, a new product that enables functional testing to be done by business analysts, subject matter experts, and other non-technical QA team members. Business Process Testing lets you build tests out of pre-built *business components*, simply by dragging and dropping those components into a *business process flow*, similar to a use case. Business Process Testing is extremely easy to use, and opens test automation to business users who in the past have had to rely on manual testing due to the complexity of traditional test automation tools.

Each business component used in Business Process Testing is built in QuickTest Professional, and stored in the Mercury Quality Center server, where it is accessible to a global testing team. A business component typically consists of the steps required to drive a single screen of your application. For example, a Login component would consist of the steps to enter a username and password, and click a Login button. Business components can easily be data-driven, making them usable in a range of test scenarios. Quality Engineers can use QuickTest Professional's Expert View to add programmatic logic to enable business components to be incorporated in a number of business process flows, and further simplify test creation by subject matter experts.

Working together, Business Process Testing and QuickTest Professional greatly reduce test maintenance times and bring business users into test automation efforts, where their subject matter expertise can be used to create tests more reflective of actual business requirements.

Custom Reports

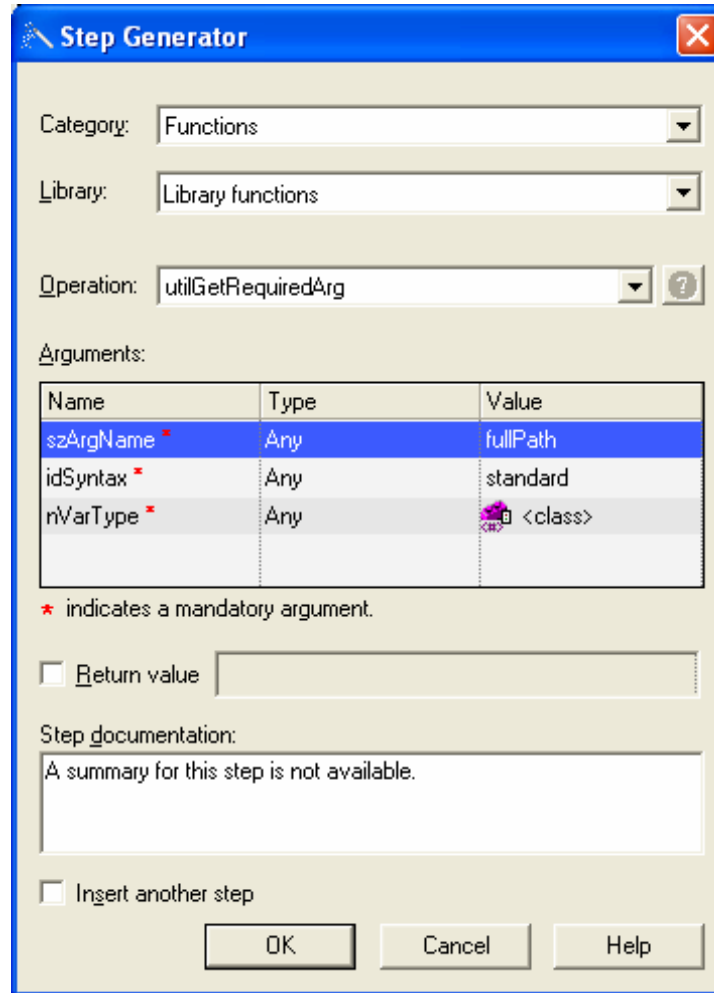
QuickTest Professional 8.0 stores report data in a documented XML format. While test results continue to be graphically viewable within QuickTest Professional, this XML data format lets you tailor reports to the specific needs of your business. Using industry-standard technologies, you can transform report data into an HTML web page, filter report data according to custom criteria, perform result set comparisons, or insert report data into a third-party defect tracking tool.

Object Highlighting

QuickTest Professional 8.0 Object Repository lets you highlight objects in the application under test. This enables you to perform real-time validation of Object Repository entries and ensure that they are fully synchronized with application objects.

Step Generator

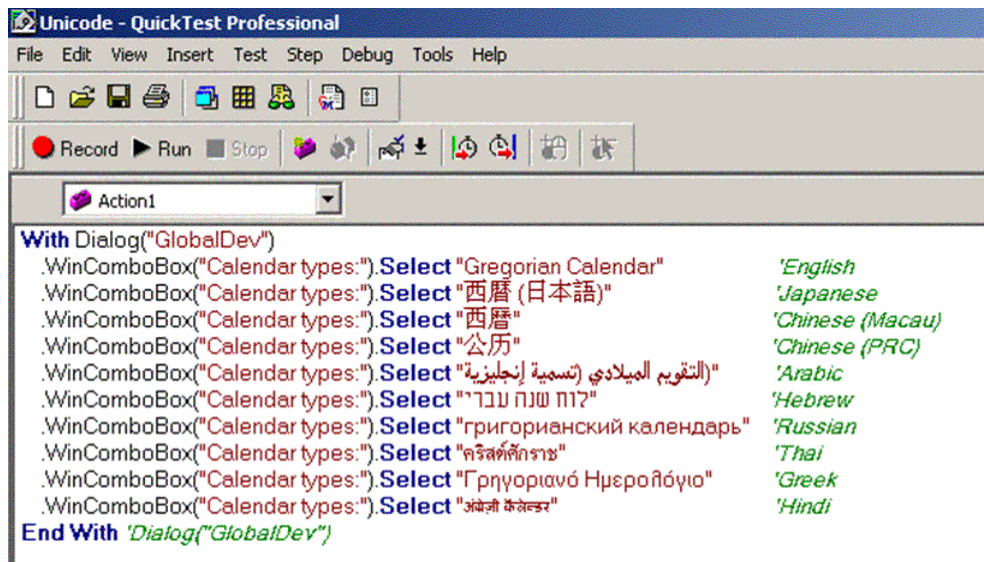
The Step Generator lets you quickly insert nearly any QuickTest Professional statement into a test, without writing code. Almost all QuickTest Professional functionality is available -- built-in VBScript functions, custom-built VBScript library functions, utility objects, and test object methods. You are prompted on which parameters to enter for each function or method, and context-sensitive online help is available with one click. Mercury WinRunner users will recognize the Step Generator as an improved version of WinRunner's Function Generator. The Step Generator makes it easy to insert statements into tests, reducing test creation time and training requirements. For users with numerous test scripts built in WinRunner, the Step Generator provides a convenient way to call those scripts from QuickTest Professional.



QuickTest Professional's Step Generator lets you insert custom functions into your tests, without writing code.

Unicode Support

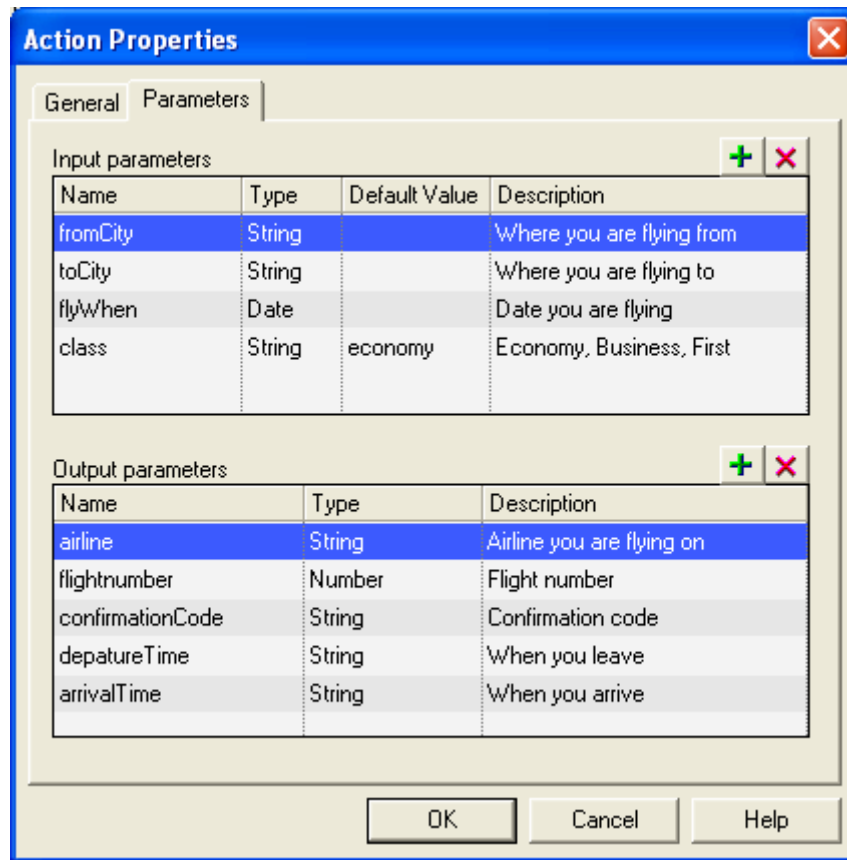
QuickTest Professional 8.0 is the only mainstream functional testing product certified as compliant to the Unicode standard. This lets you test applications in practically any language, including Chinese (simplified and traditional), Japanese, Korean, Thai, Russian, Arabic, Hebrew, Greek, Hindi, and European languages. Unicode support enables *localization testing* of applications, where you create a test for the English version of an application, then data-drive that test so that it can test that application in other languages. With QuickTest Professional, one test can validate every localized version of your application. This is essential for testing global deployments of ERP/CRM applications that support workforces in many countries.



QuickTest Professional 8.0 Unicode support lets you tests global ERP/CRM deployments that use multiple languages.

Action Parameters

In QuickTest Professional 8.0, actions can have both input and output parameters, enabling actions to be re-used in a wider range of test scenarios than previously possible. See below for an example.



QuickTest Professional 8.0 actions support parameters, facilitating higher levels of action re-use among your testing team.

Environment Support

Most QuickTest Professional 6.5 add-ins can be used with QuickTest Professional 8.0. From day one, QuickTest Professional 8.0 covers the enterprise environments used in your organization, and works with the applications that you need to test.

Specifically, the following add-ins can be used with QuickTest Professional 8.0:

- QuickTest Professional.NET Add-In 6.5.1
- QuickTest Professional Java Add-In 6.5
- QuickTest Professional Oracle Add-In 6.5
- QuickTest Professional PeopleSoft Add-In 6.5
- QuickTest Professional SAP Add-In 6.5.1
- QuickTest Professional Terminal Emulator Add-In 6.5

To use one of the above add-ins with QuickTest Professional 8.0, refer to the *QuickTest Professional 8.0 Installation Guide*, included in your QuickTest Professional package.

If you are testing Siebel: note that QuickTest Professional Siebel Add-in 6.5 cannot be used with QuickTest Professional 8.0, due to upgrades in the QuickTest Professional 8.0 add-in architecture. Instead, use QuickTest Professional Siebel Add-in 8.0, forecast for general availability in August 2004.

If you are testing web services: note that QuickTest Professional Web Services Add-in 6.0 cannot be used with QuickTest Professional 8.0, due to modifications in QuickTest Professional 8.0. We recommend that you contact your Mercury representative regarding using LoadRunner for web services functional testing.

Over the coming months, Mercury will release new add-ins for QuickTest Professional 8.0. As with previous versions, these add-ins are separately purchased from the core QuickTest Professional 8.0 application. Here are the highlights of new add-in functionality:

.NET

QuickTest Professional .NET Add-in 8.0 has **Extensible .NET Support**, by providing a public API for customers and partners to build own support for any .NET control. Got a .NET control that QuickTest Professional hasn't supported in the past? Now you can extend QuickTest Professional so that it supports this control. Mercury partners can build and resell their own libraries of .NET control support. Additionally, the .NET Add-in 8.0 supports the latest Microsoft Whidbey controls; the latest Infragistics, ComponentOne, and DevExpress grids; and Delphi 8.0 .NET WinForms controls (but not Delphi 8.0 VCL controls).

Java

QuickTest Professional Java Add-in 8.0 has **Dynamic Instrumentation**, which enables immediate support for minor updates to JDK's and JVM's. This means that when a new version of Sun JDK is released, you will be able to test applications that use this new version. **WinRunner Coexistence** lets you run both WinRunner and QuickTest Professional scripts against the same Java application. If you have a mix of WinRunner and QuickTest Professional scripts, this capability enables you to use them together as one unified *composite script*. JDK 1.5 will be supported, assuming Sun releases JDK 1.5 before the QuickTest Professional Java Add-in is completed.

Oracle

QuickTest Professional Oracle Add-in 8.0 has **11i Business-level Recording** for increased script reliability and clarity, and reduced test creation and maintenance times. For example, business-level recording leaves out trivial tree navigation steps and replaces with single step, "Choose Responsibility XYZ". This add-in also features **Dual JDK Support**, enabling you to test 11i apps running on Sun JDK 1.4.x, Oracle's new JVM of choice, in addition to JInitiator 1.1.x and 1.3.x, Oracle's traditional JVM's.

SAP

QuickTest Professional Add-in for SAP Solutions 8.0 adds support for the latest SAP versions, including SAP R/3 Unicode, SAP R/3 4.7, SAP GUI 6.20 Unicode, SAP 6.40 Unicode, and Enterprise Portal (EP) 6.0 SP3 running on web application server (WAS) 6.40. This builds upon QuickTest Professional's recent SAP eCATT Integration Certification.

Siebel

QuickTest Professional Siebel Add-in 8.0 provides support for Siebel's *Test Automation Interface*, new in Siebel 7.7. This technology was built through extensive collaboration between Siebel's and Mercury's engineering teams, and provides unprecedented levels of test script reliability and documentation clarity. Specifically, it lets customers quickly create and easily maintain test scripts across configuration changes and development phases, and sharply reduces the cost of testing.

Terminal Emulators

QuickTest Professional TE Add-in 8.0 adds support for the following terminal emulators:

- IBM Host on Demand (HOD) 8.0
- IBM PCOMM 5.7
- Attachmate Extra Terminal Viewer 3.1
- WRQ Reflection 12
- NetManage Rumba 7.2
- NetManage Web-to-Host 5.0 & 5.0 SP1

Availability and Upgrades

QuickTest Professional 8.0 is forecast to be generally available in July 2004. Customers may obtain the software by downloading it from www.quicktestpro.com, support.mercury.com, or by contacting their Mercury representative. As with previous versions, QuickTest Professional 8.0 comes with a built-in 14-day license. To use QuickTest Professional beyond this time, you must have obtained a license from Mercury.

QuickTest Professional and Astra QuickTest customers, who are current on maintenance, may upgrade to QuickTest Professional 8.0 at no charge. Customers on maintenance may trade-in earlier versions of QuickTest Professional add-ins for the most recent add-in version, at no charge.

Users of QuickTest Professional 6.5 and Astra QuickTest 6.0 can easily upgrade to QuickTest Professional 8.0. All test assets created in these products can be opened, modified, and run in QuickTest Professional 8.0.

Disclaimer

Mercury Interactive is providing the planned functionality information contained herein for informational purposes only. Future product releases may differ materially from these plans in functionality and/or timing. Mercury makes no representations or commitments that certain functionality will in fact be released and Mercury assumes no duty to update this information.

© 2004 Mercury Interactive Corporation. Patents pending. All rights reserved. LoadRunner, Mercury Interactive, the Mercury Interactive logo, the Mercury logo, TestDirector, SiteScope, and WinRunner are trademarks or registered trademarks of Mercury Interactive Corporation in the United States and/or other foreign countries. All other company, brand and product names are marks of their respective holders.