

MERCURY QUICKTEST PROFESSIONAL

Mercury QuickTest Professional™ is an advanced automated testing solution for building functional and regression test suites. It captures, verifies, and replays user interactions automatically.

Mercury QuickTest Professional provides the industry's best solution for functional and regression test automation for every major software application and environment.

QuickTest Professional is a next-generation automated testing solution that deploys the concept of Keyword-Driven testing to radically simplify test creation and maintenance. Unique to QuickTest's Keyword Driven approach, test automation experts have full access to the underlying test and object properties, via an integrated scripting and debugging environment that is round-trip synchronized with the Keyword View.

QuickTest Professional satisfies the needs of both technical and non-technical users, enabling companies to deploy higher-quality applications faster, cheaper, and with less risk. It works hand-in-hand

with our new test automation system, Mercury Business Process Testing™, to bring non-technical subject-matter experts into the quality process in a meaningful way that results in better alignment of IT and the business – and ultimately superior applications.

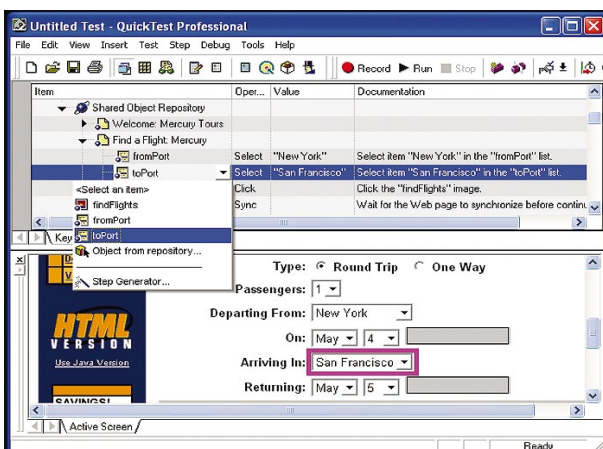
With this product, your QA organization can achieve a number of advantages:

- Empower the entire team to create sophisticated test suites with minimal training.
- Ensure correct functionality across all environments, data sets, and business processes.
- Fully document and replicate defects for developers, enabling them to fix defects faster and meet production deadlines.
- Easily regression-test ever-changing applications and environments.
- Become a key player in enabling the organization to deliver quality products and services, and improve revenues and profitability.

How it Works

QuickTest Professional allows even novice testers to be productive in minutes. You can create a test by simply declaring the test steps using the script-free Keyword view. QuickTest Professional also enables you to capture test steps via an integration Record capability. The product documents each step in plain English, and combines this with an integrated screenshot via the ActiveScreen. Unlike traditional scripting tools that produce scripts that are difficult to modify, QuickTest Professional's Keyword Driven approach lets you easily insert, modify, data-drive, and remove test steps.

QuickTest Professional can automatically introduce checkpoints to verify application properties and functionality – to validate output or



Using QuickTest Professional Keyword View, Auto-documentation, and Active Screen, you can create and modify test scripts without having to write a single line of code.

check link validity, for example. For each step in the Keyword View, an ActiveScreen shows exactly how the application under test looked at that step. You can also add several types of checkpoints for any object to verify that components behave as expected, simply by clicking on that object in the ActiveScreen.

You can then enter test data into the Data Table, an integrated spreadsheet with the full functionality of Excel, to manipulate data sets and create multiple test iterations, without programming, to expand test case coverage. Data can be typed in or imported from databases, spreadsheets, or text files.

Advanced testers can view and edit their tests in the Expert View, which reveals the underlying industry-standard VBScript that QuickTest Professional automatically generates. Any changes made in the Expert View are automatically synchronized with the Keyword View.

Once a tester has run a test, a TestFusion report displays all aspects of the test run: a high-level results overview, an expandable Tree View of the test specifying exactly where application failures occurred, the test data used, application screen shots for every step that highlight any discrepancies, and detailed explanations of each checkpoint pass and failure. By combining TestFusion reports with QuickTest Professional, you can share reports across an entire QA and development team.

QuickTest Professional handles new application builds. When an application under test changes, such as when a "Login" button is renamed "Sign In," you can make one update to the Shared Object Repository, and the update will propagate to all tests that reference this object. You can publish test scripts to Mercury Quality Management, enabling other QA team members to reuse your test scripts, eliminating duplicative work.

Through its integration with Business Process Testing, QuickTest Professional is used to enable automation through a Web-based system, allowing non-technical users to easily build tests in a completely script-free environment.

QuickTest Professional supports functional testing of all enterprise environments, including Windows, Web, .NET, Java/J2EE, SAP, Siebel, Oracle, PeopleSoft, Visual Basic, ActiveX, mainframe terminal emulators, and Web services.

Mercury Functional Testing

Customers with a large investment in Mercury WinRunner® test assets who want to move to QuickTest Professional can use Mercury Functional Testing™ to facilitate the transition. Mercury Functional Testing combines QuickTest Professional and WinRunner into a single integrated product that can leverage test assets from both WinRunner and QuickTest Professional scripts. Quality engineers can use Mercury Functional Testing to create "composite scripts" consisting of tests built in both WinRunner and QuickTest Professional. Mercury Functional Testing leverages the integration between WinRunner and QuickTest Professional, where each product can call scripts of the other, and test results are reported into a common reporting interface.

Part of Mercury Quality Center

Mercury QuickTest Professional is part of Mercury Quality Center™, an integrated set of software, services, and best practices for automating key quality activities, including requirements management, test management, defect management, functional testing, and business-process testing.

FEATURES AND BENEFITS

- Ensures immediate return on investment through industry-leading ease of use and pre-configured environment support.
- Operates stand-alone, or integrated into Mercury Business Process Testing and Mercury Quality Center.
- Introduces next-generation "zero-configuration" Keyword Driven testing technology in QuickTest Professional 8.0 – allowing for fast test creation, easier maintenance, and more powerful data-driving capability.
- Identifies objects with Unique Smart Object Recognition, even if they change from build to build, enabling reliable unattended script execution.
- Handles unforeseen application events with Recovery Manager, facilitating 24x7 testing to meet test project deadlines.
- Collapses test documentation and test creation to a single step with Auto-documentation technology.
- Easily data-drives any object definition, method, checkpoint, and output value via the Integrated Data Table.
- Provides a complete IDE environment for QA engineers.
- Preserves your investments in Mercury WinRunner test scripts, by leveraging TSL assets from QuickTest Professional/WinRunner integration.
- Rapidly isolates and diagnoses defects with TestFusion reports.
- Enables thorough validation of applications through a full complement of checkpoints.

MERCURY™

Mercury Interactive is the global leader in business technology optimization (BTO). We are committed to helping customers optimize the business value of IT.
WWW.MERCURY.COM